

# Apicomplexa-Like Parasites in Some Gastropods from Merambong Seagrass Bed, Johor Straits, Malaysia

Nur-Fauzana Azmi<sup>1</sup>, Mazlan Abd Ghaffar<sup>2</sup>, Zaidi Che Cob<sup>1,\*</sup> 

<sup>1</sup>School of Environmental and Natural Resource Sciences, Faculty of Science and Technology, Universiti Kebangsaan Malaysia, 43600 Bangi, Selangor, Malaysia.

<sup>2</sup>School of Fisheries and Aquaculture Sciences, Universiti Malaysia Terengganu, 21030 Kuala Terengganu, Terengganu, Malaysia.

## Article History

Received 09 November 2017

Accepted 07 March 2018

First Online 14 March 2018

## Corresponding Author

Tel.: +6012.2484901

E-mail: zdcc@ukm.edu.my

## Keywords

Gastropod

Gamont

Sporocyst

Trophozoite

Bacteria-like

## Abstract

This study investigates the infestations and prevalence of apicomplexa-like parasites in marine gastropods from Merambong seagrass bed in Johor Straits, Malaysia. The gastropods were collected during spring low tides, when the seagrass bed exposed. Result showed that the digestive gland and digestive duct were the most infected organs, and no parasite was observed in the gills and general tissues. The conchs (*Laevistrombus canarium* and *Canarium murceus*) displayed highest infestation rates, followed by the volutes, *Cymbiolanobilis* and *Melomelo*, and others (*Nassarius livescens* and *Notocochlistigrina*). Furthermore, parasite infestations were significantly higher in prey species (conchs), compared with their natural predator (volute). This indicated that bio-accumulation across the trophic level was not occurred, and does not involve a terminal host. Further studies are greatly needed for better understanding of the histopathology characteristic of parasite infestation at the study area, which is very important for the sustainable management of the gastropod species.

## Introduction

The phylum Apicomplexa is a large group of spore-forming, single-celled eukaryotes. Most of the Apicomplexa are obligate parasites, and some may cause important human or animal diseases such as malaria, toxoplasmosis, coccidiosis, babesiosis, theileriosis, cryptosporidiosis and others. However, many apicomplexans are not pathogenic to their host or at least not proven to be parasitic in nature. Apicomplexa possess a unique plastid-like organelle (apicoplast) and an apical complex structure involved in penetrating a host's cell (Foth & McFadden, 2003; Lim & McFadden, 2010; Sato, 2011). Members of this phylum include organisms such as Coccidia, gregarines (Gregarinasina), piroplasms (Piroplasmida), haemogregarines (Haemogregarinidae), and plasmodia (Plasmodiidae). They have three transformation stages to complete their life cycle known as gamonts, sporocysts and trophozoites (Rohde, 2005; Sato, 2011). This complex life-cycle involving both asexual and sexual reproduction. After invasion, they divide to produce sporozoites (spores) that enter the host's cells.

The cells will eventually burst and releasing merozoites that infect new cells. This may occur several times, until gamonts were produced, forming gametes that fused to create new cysts. However, there are variations in this basic pattern, which may involve a single host (monoxenous) or more (heteroxenous) (Leander, 2003; Mikheev, 2011).

The studies of parasitism relationship between apicomplexa parasites and marine gastropod have widely been studied and reported. For examples the coccidian parasite in *Strombus gigas* (Baqueiro-Cárdenas *et al.*, 2007), *Nematopsis gigas* in *Nerita ascensionis* (Azevedo & Padovan, 2004), *Pseudoklossia haliotis* in *Haliotis* spp. (Friedman *et al.*, 1995). Mollusks are important seafood and fishery resource and some of them have been commercially cultured. The study of parasites and diseases affecting mollusks with economic interest is very important both for the management of natural stock and for aquaculture (Boehs *et al.*, 2010; Carnegie *et al.*, 2016). The objective of this study is therefore to investigate the incidence of apicomplexa-like parasites infestation in some important gastropods from Merambong Shoal, Johor, Malaysia.

## Materials and Methods

### Gastropod Sample Collection

Live gastropod samples were collected from November 2012 to February 2013 at the Merambong Shoal seagrass bed, Johor Straits, Malaysia (1° 19. 55' N, 103° 35. 57' E) (Figure 1). Samples were collected by hand and kept in a container with a small volume of seawater, and were brought back to the laboratory for analysis. The seagrass bed contained high diversity of gastropods (Cob *et al.*, 2008, 2014), but only the more dominant, conspicuous, and economically important species were sampled. This include the conchs *Laevistrombus canarium* (Linnaeus, 1758) and *Canarium urceus* (Linnaeus, 1758), the volutes *Cymbiolanobilis* (Lightfoot, 1786) and *Melomelo* (Lightfoot, 1786), the mud snail *Nassarius livescens* (Philippi, 1849) and the moon snail *Notocochlistigrina* (Roding, 1798). Throughout the sampling period a total of 100 *L. canarium* individuals have been sampled, followed by 75 individuals of *C. urceus*, ten individuals of *C. nobilis*, ten individuals of *N. livescens*, 5 individuals of *M. melo* and 5 individuals of *N. tigrina*.

### Histological Analyses

The mollusks' digestive gland, digestive duct, gonad, renal organ, proboscis, heart, gill and general tissue were dissected and fixed in Bouin's Solution for 24 hours. The tissues were dehydrated in an ethanol series and embedded in paraffin, sectioned (4-5 µm thick) and stained using a Masson's trichrome staining protocol (Prophet *et al.*, 1992). The histological sections were observed under a light microscope. The presence of the Apicomplexa and other parasites was identified following descriptions by Meyers and Burton (2009), Kim

*et al.* (2006), Desser *et al.* (1998), and others. Various apicomplexan life cycle stages were identified according to Perkins (1991), based on the presence or lack of a thick wall and/or an inner budding. The parasite prevalence (number of gastropod with parasite or pathology per number of gastropod examined), and distribution in the host were evaluated for each snail. The intensity of parasite infestation was evaluated by counting the number of parasites or pathology per histologic section if possible, or by gross estimation without counting (Kim & Powell, 2006; Boehs *et al.*, 2010).

## Results

### Histological Observations

Microscopic examination of the histologic sections of the gastropod showed that all species studied were infected by the Apicomplexa-like parasite. In general, almost all organs were infected except for the gills and the general tissue. The parasite infestation and pathologies on the respective tissues is presented in Table 1.

### Digestive Gland

There are three different types of cells in the digestive gland, that is the vacuolated cells, digestive cells and crypt cells. In *L. canarium* and *C. urceus*, different life cycle stage of Apicomplexa parasite i.e. gamonts, sporocysts and trophozoite were observed in all the three digestive gland cell types, with 100% prevalence (Figure 2a, 2b). The gamonts were characterized by their thin wall, sporocysts by their thick walls, and trophozoite by their apical conoid-like structure. Apart from that, different types of spores and elongated parasite were also observed in the digestive

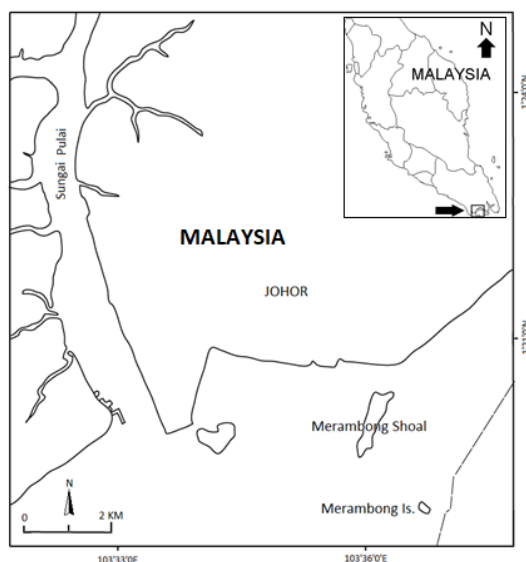


Figure 1: Sampling location, at Merambong Shoal, Johor Straits, Malaysia.

cells of this two conch species. In the predatory volutes, *C nobilis* and *M melo*, sporozoa-like organisms were found in their digestive cells with 100% prevalence and infection intensity (Figure 2c, d). There was no parasite observed in the digestive gland of the scavenging gastropod *N. livescens* and another predator *N. tigrina*.

### Digestive Duct

Digestive duct is one of the organs in the digestive gland. There are two sections in the duct that is the primary and secondary duct. The primary duct was bordered with two epithelium structure, i.e. plicate epithelium and flat epithelium. This primary duct contained coarse inclusions and flocculent substance. Histological section showed that the digestive duct was infected by protozoan parasite, that were also present in

the digestive gland described above. The primary duct of *L. canarium* and *C. urceus* were infected by gamonts and sporocyst with high infestation (75%) and prevalence rates (50%) (Figure 3a, b). The primary duct of *C. nobilis* and *M. melo* also showed high infestation and prevalence rates, at 75% and 40% respectively.

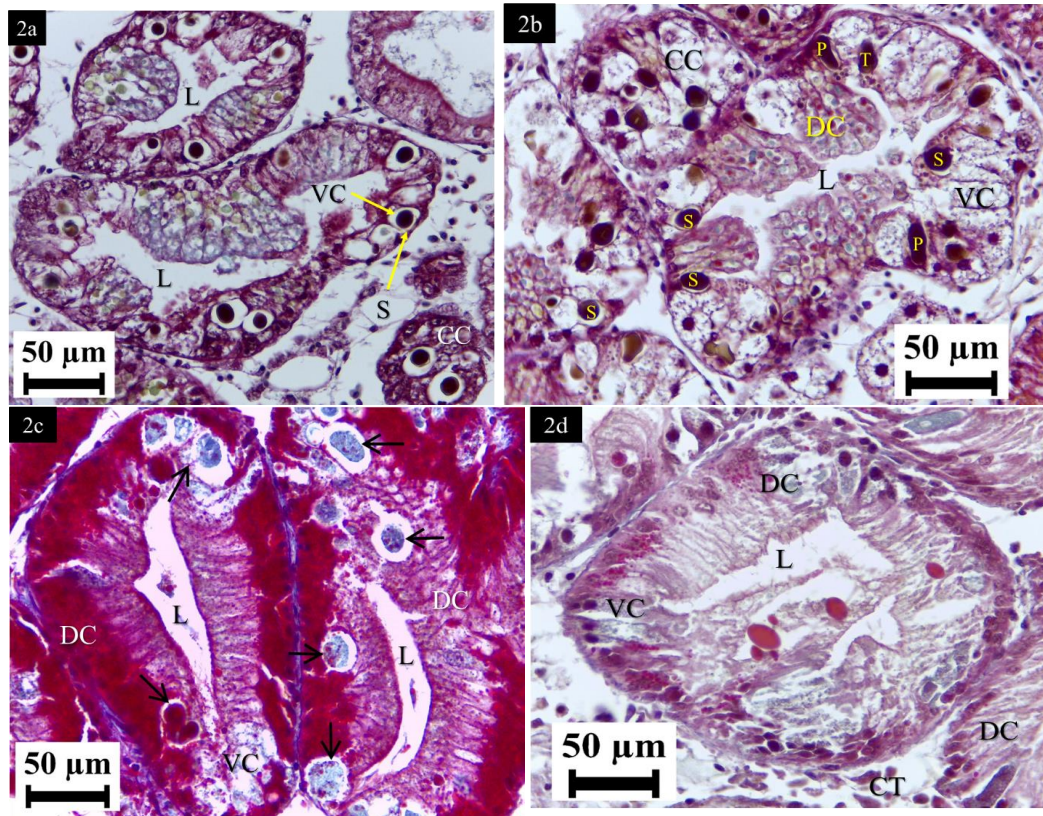
### Gonad

Majority of the gonad samples analyzed were mature gonads of males (spermatozoa) and females (oocyst). An inclusion of a Rickettsia-like organism was observed in the wall of developed ovary of *L. canarium* and *C. urceus*, with moderately high prevalence rate (40% to 46.7%), but low in intensity (1.67% to 1.78%) (Figure 4a & 4b). Apart from that, a coccidian infection was also observed in the developing wall of ovary of *C.*

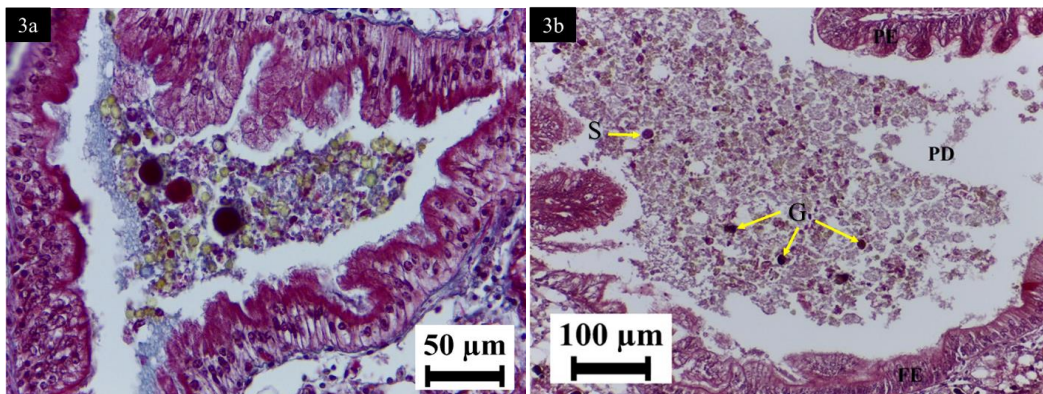
**Table 1.** Apicomplexa-like parasites stages/species infestation and pathologies of the gastropod tissues and organs. P = Parasite prevalence (number of gastropod with parasite or pathology per number of gastropod examined); I = Infection intensity (number of parasites or pathology per histological section). ND = not detected; number of samples in parenthesis

	<i>Laevistrombusca narium</i> (100)	<i>Canariumurceus</i> (75)	<i>Cymbiolanobilis</i> (10)	<i>Melomelo</i> (5)	<i>Nassariuslivescens</i> (10)	<i>Notocochlistigrina</i> (5)
Digestive Gland	Gamonts P = 100; I = 20 Sporocyst P=100; I=33.7 Trophozoite P=100; I=1.0 Elongated parasite P=50; I=1.67 Spore colony P=100; I=75.3	Gamonts P = 100; I = 20.9 Sporocyst P = 100; I = 44.9 Trophozoite P = 100; I = 1.00 Elongated parasite P = 50; I = 3.56 Spore colony P = 100; I = 62.2	Sporozoa-like organisms P = 100; I = 100	Sporozoa-like organisms P = 100; I = 100	ND	ND
Digestive Duct	Sporocyst P = 75; I = 2.0 Gamonts P = 75; I = 15 Spore colony P = 100; I = 29.3	Sporocyst P = 50; I = 22.7 Gamonts P = 50; I = 13.3 Spore colony P = 100; I = 40	Bacteria-like inclusions P = 75; I = 100	Bacteria-like inclusions P = 40; I = 100 Spore colony P = 100; I = 100	ND	ND
Gonad	Rickettsia-like organisms P = 40; I = 1.67	Rickettsia-like organisms P = 46.7; I = 1.78 Coccidian P = 35.6; I = 12.4	ND	ND	ND	ND
Renal (kidney) Organ	Sporocyst P = 75; I = 2.67 Rickettsia-like organisms P = 50, I = 4 Oocyst of <i>Pseudoklossia</i> P = 50; I = 1.67 Spore colony P = 50; I = 12.0 Unidentified Coccidia P = 50; I = 20.5	Rickettsia-like organisms P = 50.7; I = 1.33 Spore colony P = 50; I = 16.4	Sporocyst P = 75; I = 100 Spore colony P = 100; I = 100	Spore colony P = 100; I = 100	Bacteria-like inclusions P = 33.3; I = 100	Bacteria-like inclusions P = 66.7; I = 100
Proboscis	Bacteria-like inclusions P = 50; I = 94	Bacteria-like inclusions P = 50; I = 100	ND	ND	ND	ND
Heart	Spore colony of <i>Nematopsis</i> P = 40; I = 1.67 Spore colony P = 50; I = 12.7	Bacteria-like inclusions P = 60; I = 100	Spore colony P = 60; I = 100 Rickettsia-like organisms P = 37.5; I = 10	Spore colony P = 60; I = 100	ND	ND





**Figure 2.** Trophozoite (T) and sporocyst (S) in the vacuolated cells (VC) and digestive cells (DC) of the digestive gland (DG) of *Laevistrombuscanarium* (2a) and *Canariumurceus*(2b). Sporozoa-like organisms in the vacuolated cells of digestive gland of *Cymbiolanobilis* (2c) and *Melomelo* (2d). L = Lumen of the tubule; CC = Crypt cells.



**Figure 3.** Sporocyst (S) and gamont (G) in the primary duct (PD) of the digestive duct of *Laevistrombuscanarium* (3a) and *Canariumurceus* (3b). PD is bounded by two epithelium structure such as a plicate epithelium (PE) and flat epithelium (FE).

*urceus*, but with low intensity 12.4% and 35.6% prevalence (Figure 4b).

### Renal Organ

Renal organ of all gastropods studied were found infected by the apicomplexa-like parasite and sporozoa-like organisms. Inclusion of this parasites and sporozoaoccupying most of the intracellular space of the epithelial tissues. In *L. canarium*, different development stages of matured oocysts of *Pseudoklossia* was found in the epithelium cells of the renal organ(Figure 5a). There

were also mild inclusions of coccidian detected in renal cells of *L. canarium* with 50% prevalence. Colony of spores were present in renal organ of *L. canarium*, *C. urceus*, *C. nobilis* and *M. melo*, with highest intensity in the renal cells of *C. nobilis* and *M. melo*(Fig. 5b). Bacteria-like inclusions were observed with in the renal organ of *N. livescens* and *N. tigrina*, with 33.3% and 66.7% prevalence respectively.

### Proboscis

All the muscles of the proboscis, including the head



sections that contains a terminal buccal mass were analyzed. The histological analysis showed a bacterial-like inclusions in the proboscis of *L. canarium* and *C. urceus* with 50% prevalence and up to 100% infection intensity (Figure 6a & b). The bacterial-like organism were rod and spherical shaped. The proboscis of *C. nobilis*, *Melomelo*, *N. livescens* and *N. tigrina* were not infected with any parasites.

### Heart

The heart of four species, *L. canarium*, *C. urceus*, *C. nobilis* and *M. melo* were found infected by parasites with relatively high infestation rates. The *Nematopsis* spores have infected the heart of *L. canarium* with 40% prevalence, but at low intensity of 1.67% (Figure 7a), while bacterial-like inclusions were observed in *C. urceus* with 60% prevalence and 100% infection intensity (Figure 7b). The heart of *C. nobilis* and *Melomelo* were infected by spore colonies with 60% prevalence and 100% intensity (Figure 7c and 7d). Moreover, Rickettsia-like organisms were also observed in the heart of *C. nobilis*, but only with mild prevalence and intensity values.

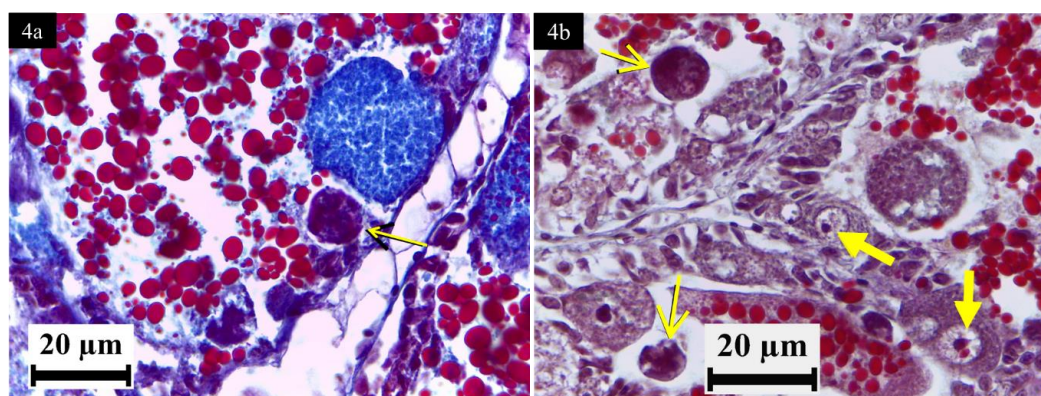
### Gill and Tissue

In this study the gill and tissue was also analyzed but no parasite infestation nor pathology were observed in the six species of gastropods studied.

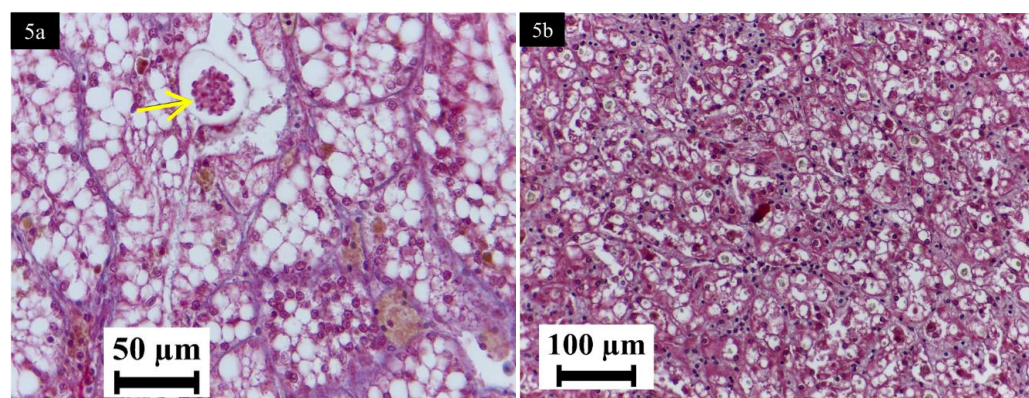
### Discussions

Information on parasite infestations in marine resources are not only important for the management of the species, but also for the people as direct consumer of the resources. The studies of parasitism relationship between apicomplexa parasites and their marine gastropod hosts are very limited throughout the Southeast Asian region. Although Johor Straits is a rapidly developing coastal area where many scientific studies have been conducted over the years, information regarding parasites in gastropods is currently not available. Study by Nurfauzana, Mazlan and Cob (2014) on bivalves from the same area found high incidence of parasite infestations in the species studied.

This study showed that the digestive gland, digestive duct and renal organ were the most infected, followed by the gonad, proboscis and heart tissue.

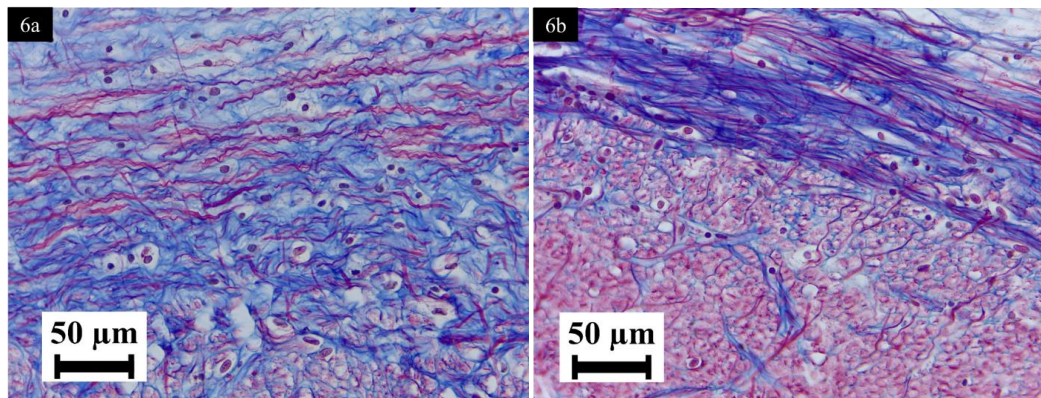


**Figure 4.** Infestation of Rickettsia-like organism (thin arrow head) and coccidian (thick arrow head) in the developed wall of ovaries of *Laevistrombus canarium* (4a) and *Canarium urceus* (4b).

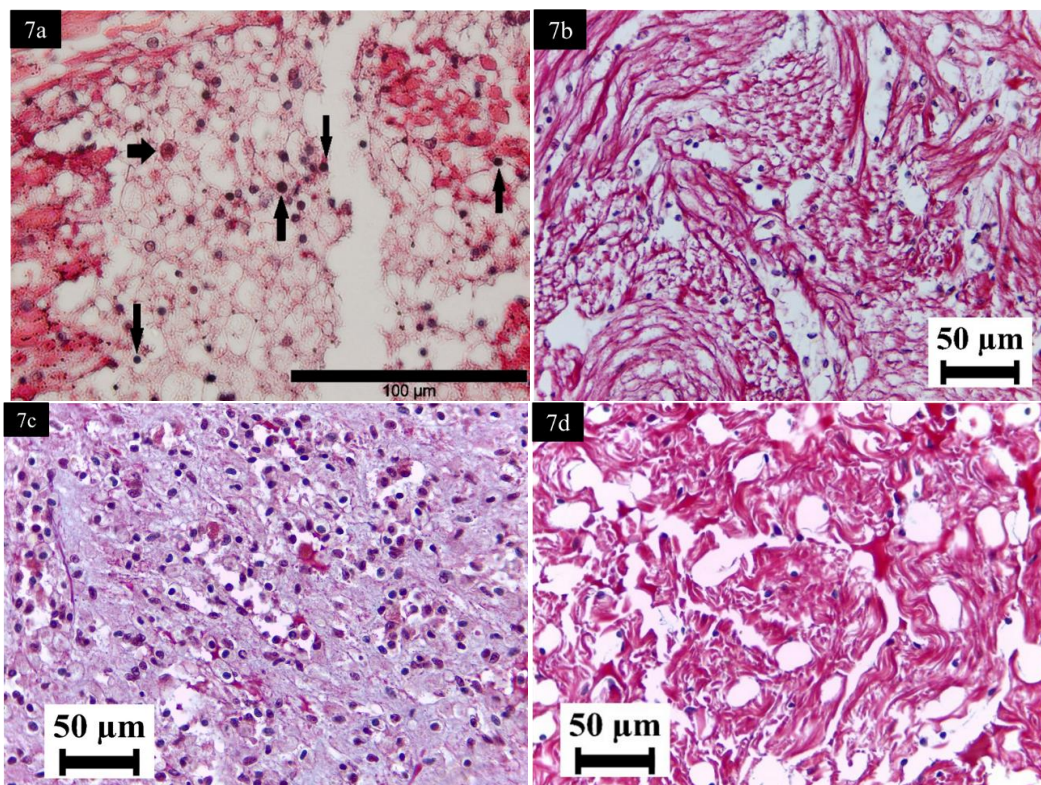


**Figure 5.** Different level of oocyst of *Pseudoklossia* (arrow) and sporozoa-like organisms in the renal cells of the renal organs of *Laevistrombus canarium* (5a); and spore colony with highest infection in renal cells of *Melomelo* (5b).





**Figure 6.** Inclusion of rod and spherical shaped colony of bacteria-like organisms in the infected proboscis of *Laevistrombus canarium* (6a) and *Canarium urceus* (6b).



**Figure 7.** *Nematopsis* spore (thick arrow) and spore colony (thin arrow) in the infected heart of *Laevistrombus canarium* (7a); infestation of bacterial-like inclusion in the infected heart of *Canarium urceus* (7b); spore colony in the heart cells of *Cymbiolanobilis* (7c) and *Melomelo* (7d).

Parasite infestation was however not detected in the gills and the general tissues. Different apicomplexa development stages were observed, which include the gamonts, sporocysts and trophozoites, and most of them were particularly abundant in the digestive gland and digestive duct. Different types of apicomplexa such as the oocyst of *Pseudoklossia* and coccidian were also observed. Apart from that, other infections and pathological conditions were also observed such as infestation by spores, bacterial, Sporozoa-like organisms, Rickettsia and others.

Among the gastropod species studied, the conch snails, *L. canarium* and *C. urceus* recorded the highest prevalence and intensity values, which ranged between 50% to 100%, and 1% to 75% respectively. Furthermore,

both species showed similar patterns of infection where the highest prevalence and intensities were recorded in the digestive gland and digestive duct. Conchs are highly commercial species and some have been listed in CITES due to overexploitation (Acosta, 2006). Studies on other conchs, particularly in the Caribbean region, have reported apicomplexa-like parasite infestation in species such as *Strombus gigas* (Baqueiro-Cárdenas *et al.*, 2005, 2007; Gros *et al.*, 2009), *Strombus gallus* (Volland *et al.*, 2008), *Strombus raninus* (Volland *et al.*, 2008), *Strombus costatus* and *Strombus pugilis* (Volland *et al.*, 2009). These above studies also reported similar observations where different apicomplexa life stages were present in a single host. Furthermore, similar patterns of parasite infection were reported where the

digestive gland and digestive duct were the most infected.

Apart from the digestive gland and digestive duct, the gonad, proboscis and heart of *L. canarium* and *C. urceus* were also infected. The gonad and proboscis were infected by bacteria-like inclusions and Rickettsia-like organisms. The heart of *L. canarium* was infected by *Nematopsis* and spore colony, while the heart tissue of *C. urceus* was infected by bacteria-like inclusion. Previous studies on parasite infections in gastropods and other mollusks were focused more on the digestive gland, as it is the most likely organ to be infected (Gros *et al.*, 2009; Volland *et al.*, 2008, 2009; Aldana Aranda *et al.*, 2011; Baqueiro-Cárdenas *et al.*, 2012). If these organs become highly infected, then some parasites may secondarily invade adjacent organs such as gonad and others (Cheng & Cooperman, 1964; Pan, 1965). The low infection rates recorded in gonad, proboscis and other tissues indicate that parasite infections were not in deleterious state, and no mortality or serious pathological response was observed. Nevertheless, the presence of bacteria-like inclusions and Rickettsia-like organisms should be monitored as they have been associated with diseases and mortality in some mollusks (Antonio *et al.*, 2000; Moore *et al.*, 2000, Hine & Diggles, 2002; Hine *et al.*, 2002; Azevedo *et al.*, 2005, 2006).

The gastropod species selected for this study were from different trophic levels. The conchs (*L. canarium* and *C. urceus*) are surface grazers, the mud snail (*N. livescens*) is a scavenger, while the moon snail (*N. tigrina*) and the volutes (*C. nobilis* and *M. melo*) are predators. The moon snail preys mostly on bivalves, while the volutes are more voracious predators, preying on other mollusks, particularly the conchs. There were significantly higher parasite infestation rates in the conchs compared with their natural predator, the volutes. This indicated that there was no trophic transfer involved, and the volutes are not functioning as terminal host, which is a common trait for many other parasites. Furthermore, the apicomplexa-like parasites were able to complete their life cycle in single host (monoexous), as showed by the histological results where various stages were found in a single host. Thus it was suggested that the main route of apicomplexa infection probably from the sediment, during the conch feeding (grazing) on the surface sediment. Coccidian parasites are transmitted between hosts by the ingestion of food contaminated with oocysts, followed by the release of infectious sporozoites and invasion of cells and tissues. Since parasite in the sediment, in the water and the surroundings was not sampled, further studies are needed to confirm this hypothesis.

## Conclusion

The present study is very important as a pioneer research that described the presence of protozoan

parasites in gastropods from Malaysian coastal waters. Currently, contamination of molluscs by pathogenic protozoa has been presented as an emerging aspect with implications for public health (Cardozo *et al.*, 2013). Although there has not been reports of protozoan infections outbreaks related to the ingestion of seafood, the occurrence of Apicomplexa-like parasites has been reported in many bivalves and gastropods worldwide (Leal & Franco, 2008; Gros *et al.*, 2009; Cardozo *et al.*, 2013; Nur-Fauzana *et al.*, 2014). Thus, there is potential risks of acquiring protozosis by ingestion of raw or undercooked shellfish (Rose *et al.*, 2002). This study also showed highest infestations in the conchs, which were harvested and consumed by the locals, thus need more detail examination. Information on health profile of traded species are important not only to the research community, but also to the general public and the local authorities. Further studies are therefore suggested, and should probably be using more advanced approaches such as the molecular techniques, PCR-nested methods, the use of Ray's Fluid Thioglycollate Medium (RFTM) and in-vitro method.

## Acknowledgment

Special thanks to Mr. Zuhaimi, Mr. Husdy and Mr. Azarinda for their assistance during field sampling and Ms. Habibah Sebot for helping in histological work. This study was funded by research grant from the Ministry of Science, Technology and Innovation, Malaysia (MOSTI) through Fundamental Research Grant Scheme, FRGS/2/2014/STWN10/UKM/02/1.

## References

- Acosta, C.C. (2006). Impending Trade Suspensions of Caribbean Queen Conch under CITES: A Case Study on Fishery Impacts and Potential for Stock Recovery. *Fisheries*, 31(12), 601–606. [https://doi.org/10.1577/1548-8446\(2006\)31\[601:ITSOCQ\]2.0.CO;2](https://doi.org/10.1577/1548-8446(2006)31[601:ITSOCQ]2.0.CO;2)
- Aldana-Aranda, D., Frenkiel, L., Brulé, T., Montero, J., & Baqueiro-Cárdenas, E. (2011). Occurrence of Apicomplexa-like structures in the digestive gland of *Strombus gigas* throughout the Caribbean. *Journal of Invertebrate Pathology*, 106(2), 174–178. <https://doi.org/10.1016/j.jip.2010.09.004>.
- Antonio, D.B., Andree, K.B., Moore, J.D., Friedman, C.S., & Hedrick, R.P. (2000). Detection of Rickettsiales-like prokaryotes (RLPs) by in situ hybridization in black abalone *Haliotis cracherodii* with Withering Syndrome. *Journal of Invertebrate Pathology*, 75(2), 180–182. <https://doi.org/10.1006/jip.1999.4906>.
- Azevedo, C., Mendonça, I., & Matos, E. (2005). Ultrastructural analysis of Rickettsia-like organisms in the oyster *Crassostrea irizophorae* from the Northeastern Atlantic coast of Brazil. *Brazilian Journal of Morphological Science*, 22(1), 5–8. <http://jms.org.br/PDF/v22n1a02.pdf>.
- Azevedo, C. & Padovan, I. (2004). *Nematopsis gigas* n. sp. (Apicomplexa), a Parasite of *Nerita ascensionis* (Gastropod, Neritidae) from Brazil. *Journal of*

- Eukaryotic Microbiology*, 51, 214 – 219. <https://doi.org/10.1111/j.1550-7408.2004.tb00548.x>
- Azevedo, C., Balseiro, P., Casal, G., Gestal, C., Aranguren, R., Stokes, N.A., Carnigie, R.B., Novoa, B., Burreson, E.M., & Figueras, A., (2006). Ultrastructural and molecular characterization of *Haplosporidium montforti* n. sp., parasite of the European abalone *Haliotis tuberculata*. *Journal of Invertebrate Pathology*, 92(1), 23–32. <https://doi.org/10.1016/j.jip.2006.02.002>.
- Baqueiro-Cárdenas, E., Frenkiel, L. & Aldana-Aranda, D. (2005). One more threat for the queen conch *Strombus gigas*: coccidian (Apicomplexa) infection of *S. gigas* digestive gland (preliminary results). *Proceedings of the Gulf and Caribbean Fisheries Institute*, 58, 421-426. [http://proceedings.gcfi.org/sites/default/files/procs/gcfi\\_58-57.pdf](http://proceedings.gcfi.org/sites/default/files/procs/gcfi_58-57.pdf)
- Baqueiro-Cárdenas, E., Frenkiel, L., Zetina Zarate, A. & Aldana-Aranda, D. (2007). Coccidian (Apicomplexa) Parasite *Strombus gigas* Linné, 1758 Digestive Gland. *Journal of Shellfish Research*, 26(2), 319–321. [https://doi.org/10.2983/0730-8000\(2007\)26\[319:CAPISG\]2.0.CO;2](https://doi.org/10.2983/0730-8000(2007)26[319:CAPISG]2.0.CO;2).
- Baqueiro-Cárdenas, E., Montero, J., Frenkiel, L., & Aldana-Aranda, D. (2012). Attenuated reproduction of *Strombus gigas* by an Apicomplexa: Emeriidae-like parasite in the digestive gland. *Journal of Invertebrate Pathology*, 110(3), 398–400. <https://doi.org/10.1016/j.jip.2012.03.017>.
- Boehs, G., Villa, A., Ceuta, L.O., & Luz, J.R. (2010). Parasites of three commercially exploited bivalve mollusk species of the estuarine region of the Cachoeira river (Ilhéus, Bahia, Brazil). *Journal of Invertebrate Pathology*, 103(1), 43–47. <https://doi.org/10.1016/j.jip.2009.10.008>.
- Cardozo, S.V., Berto, B.P., Cardozo, T.S.F., de Mesquita, E.D.F., & Lopes, C.W.G. (2013). Oocysts of *Cryptosporidium tyzzeri*, 1907 (Apicomplexa: Cryptosporidiidae) in brown mussels *Perna perna* L., 1758 (Mollusca: Bivalvia) in Ponta do Tingui, Mangaratiba, RJ: A biomarker of environmental contamination. *Coccidia*, 1(2), 32–38. <http://r1.ufrj.br/lcc/Coccidia/vol/v1n2/p32-38.pdf>.
- Carnegie, R.B., Arzul, I., Bushek, D. (2016). Managing marine mollusc diseases in the context of regional and international commerce: policy issues and emerging concerns. *Philosophical Transactions of the Royal Society B*, 371, 20150215. <http://dx.doi.org/10.1098/rstb.2015.0215>.
- Cheng, T.C., & Cooperman, J.S. (1964). Studies on the host-parasite relationships between larval trematodes and their hosts. V. The invasion of the reproductive system of *Helisomatrivolvis* by the sporocysts and cercariae of *Glythelminspennsylvaniensis*. *Transactions of the American Microscopical Society*, 83(1), 12–23. <http://dx.doi.org/10.2307/3224835>
- Cob, Z.C., Arshad, A., Japar Sidik, B., & Mazlan, A.G. (2014). Spatial and Temporal Variations in *Strombus canarium* (Gastropoda: Strombidae) Abundance at Merambong Seagrass Bed, Malaysia. *Sains Malaysiana*, 43(4), 503–511. [http://www.ukm.my/jsm/pdf\\_files/SM-PDF-43-4-2014/02%20Zaidi%20Che%20Cob.pdf](http://www.ukm.my/jsm/pdf_files/SM-PDF-43-4-2014/02%20Zaidi%20Che%20Cob.pdf).
- Cob, Z.C., Arshad, A., Muda, W.L.W., & Mazlan, A.G. (2008). Gastropod and Bivalve Mollusks Associated with The Seagrass Bed at Merambong Shoal, Johor Straits, Malaysia. In: C.A.R. Mohamed, F.K. Sahrani, M.M. Ali, Z.C. Cob & N. Ahmad (Eds.), *Malaysia Marine Ecosystem: The studies of Johor Darul Takzim East Coast* (pp 89-100). Marine Ecosystem Research Centre, Universiti Kebangsaan Malaysia. 176 pp.
- Desser S.S., Bower, S.M., & Hong H. (1998). *Pseudoklossiasemiluna* N. Sp. (Apicomplexa: Aggregatidae): A Coccidian Parasite of the Kidney of Blue Mussels, Species of *Mytilus*, From British Columbia, Canada. *Parasite*, 5(1), 17–22. <https://doi.org/10.1051/parasite/1998051017>.
- Foth, B.J., & McFadden, G.I. (2003). The apicoplast: A plastid in *Plasmodium falciparum* and other apicomplexan parasites. *International Review of Cytology*, 224, 57–110. [https://doi.org/10.1016/S0074-7696\(05\)24003-2](https://doi.org/10.1016/S0074-7696(05)24003-2).
- Friedman, C.S., Gardner, G.R., Hedrick, R.P., Stephenson, M., Cawthorn, R.J., & Upton, S.J. (1995). *Pseudoklossia haliotis* sp. n. (Apicomplexa) from the kidney of California abalone, *Haliotis* spp. (Mollusca). *Journal of Invertebrate Pathology*, 66(1), 33–38. <https://doi.org/10.1006/jipa.1995.1057>.
- Gros, O., Frenkiel, L., & Aranda Aldana, D. (2009). Structural Analysis of the Digestive Gland of the Queen Conch *Strombus gigas* Linnaeus, 1758 and its Intracellular Parasites. *Journal of Molluscan Studies*, 75, 59–68. <https://doi.org/10.1093/mollus/eyn041>.
- Hine, P.M., & Diggles, B.K. (2002). Prokaryote infections in the New Zealand scallops *Pecten novaezelandiae* and *Chlamys delicatula*. *Diseases of Aquatic Organisms*, 50(2), 137–144. <http://dx.doi.org/10.3354/dao050137>.
- Hine, P.M., Wakefield, S., Diggles, V.L., & Maas, E.W. (2002). Ultrastructure of a haplosporidian containing rickettsiae, associated with mortalities among cultured paua *Haliotis iris*. *Diseases of Aquatic Organisms*, 49(3), 207–219. <http://dx.doi.org/10.3354/dao049207>.
- Kim, Y., & Powell, E.N. (2006). Relationships among parasites and pathologies in sentinel bivalves: NOAA Status and Trends “Mussel Watch” Program. *Bulletin of Marine Science*, 79(1), 83–112. [https://hsrl.rutgers.edu/abstracts/articles/Kim+Powell\\_BMS.pdf](https://hsrl.rutgers.edu/abstracts/articles/Kim+Powell_BMS.pdf)
- Kim, Y., Ashton-Alcox, K.A. & Powell, E.N. (2006). Histological Techniques for Marine Bivalve Molluscs: Update. Silver Spring, MD. NOAA Technical Memorandum NOS NCCOS 27, 76 pp.
- Leander, B. S. (2003). Phylogeny of gregarines (Apicomplexa) as inferred from small-subunit rDNA and beta-tubulin. *International Journal of Systematic and Evolutionary Microbiology*, 53(1), 345–354. <http://dx.doi.org/10.1099/ijs.0.02284-0>.
- Lim, L., & McFadden, G.I. (2010). The evolution, metabolism and functions of the apicoplast. *Philosophical Transactions of the Royal Society B*, 365, 749–763. <http://dx.doi.org/10.1098/rstb.2009.0273>.
- Meyers, T. & Burton, T. (2009). Disease of wild and cultured shellfish in Alaska. Fish Pathology Laboratory, Alaska Department of Fish and Game, USA, 130 pp.
- Mikheev, V.N. (2011). Monoxenous and heteroxenous parasites of fish manipulate behavior of their hosts in different ways. *Zhurnal Obshchei Biologii*, 72(3), 183–97. PreMedline Identifier: 21786661.
- Moore, J.D., Robbins, T.T., & Friedman, C.S. (2000). Withering syndrome in farmed red abalone *Haliotis rufescens*: Thermal induction and association with a gastrointestinal rickettsia-like prokaryote. *Journal of Aquatic Animal Health*, 12(1), 26–34.



- 8667(2000)012<0026:WSIFRA>2.0.CO;2
- Nur-Fauzana, A., Mazlan, A.G., & Cob, Z.C. (2014). Apicomplexa-like Parasite of Economically Important Bivalves from Merambong Shoal, Johor. *Malayan Nature Journal*, 66(1 & 2), 96-106. <http://mnj.my/index.php/mnj/article/view/114>.
- Pan, T.C. (1965). Studies on the host- parasite relationships between *Schistosomamansonii* and *Australorbisglabratus*. *American Journal of Tropical Medicine and Hygiene*, 14, 931-976. <https://doi.org/10.4269/ajtmh.1965.14.931>.
- Perkins, F.O. (1991). 'Sporozoa': Apicomplexa, Microsporidia, Haplosporidia, Paramixia, Myxosporidia, and Actinosporidia. In: F.W. Harrison & J.O. Corliss (Eds.), *Microscopic Anatomy of Invertebrates*. Vol. 1: Protozoa (pp 261–331). Wiley-Liss, New York. 493 pp.
- Prophet, E.B., Mills, B., Arrington, J.B., & Sobin, L.H. (1992). *Laboratory Methods in Histotechnology*, 4th ed. Washington: American Registry of Pathology, 132 pp.
- Rohde, K. (2005). *Marine Parasitology*. CSIRO Publishing, 592 pp.
- Rose, J.B., Huffman, D.E., & Gennaccaro A. (2002). Risk and control of waterborne cryptosporidiosis. *FEMS Microbiology Reviews*, 26(2), 113-123. <http://dx.doi.org/10.1111/j.1574-6976.2002.tb00604.x>.
- Sato, S. (2011). The apicomplexan plastid and its evolution. *Cellular and Molecular Life Sciences*, 68, 1285–1296. <https://doi.org/10.1007/s00018-011-0646-1>.
- Volland, J-M., Aldana-Aranda, D. & Gros, O. (2008). Detection of Apicomplexa like parasites in two species belonging to the family Strombidae: *Strombusgallus*, Linnaeus, 1758 and *S. raninus*, Gmelin 1791. 61<sup>st</sup> Annual Conference of the Gulf Caribbean Fisheries Institute (pp. 503-505). Pointe à Pitre, Guadeloupe. 567 pp.
- Volland, J-M., Aldana-Aranda, D., & Gros, O. (2009). Detection of Apicomplexa like parasites in two species belonging to the family Strombidae: *Strombusgallus*, Linnaeus, 1758 and *S. raninus*, Gmelin 1791. 61<sup>st</sup> Annual Conference of the Gulf Caribbean Fisheries Institute (pp. 430-432). Pointe à Pitre, Guadeloupe. 567 pp.